

## Class Schedule

The course will be held at the Pennsylvania Biotechnology Center on Monday evenings starting April 11, 2016 and going through May 27, 2016 (7:00 – 9:00 PM).

### **April 11:**

Introduction, Patentability Requirements & the America Invents Act

### **April 18:**

Patent Defeating Activities & Confidentiality

### **April 25:**

Prior Art Search & Anatomy of a Patent

### **May 2:**

Notebook Requirements & Concept of Inventor v. Contributor v. Owner

### **May 9:**

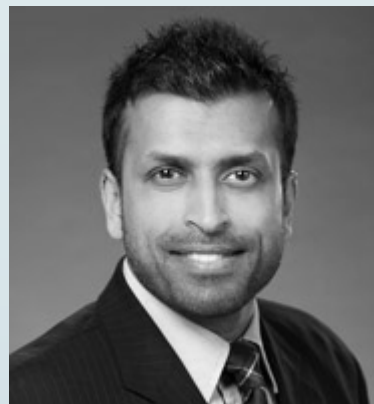
Patent Infringement/Enforcement & Licensing and Commercialization

### **May 16:**

Government Funding & Global Considerations

### **May 23-27:**

Scheduling of one-one-one private consultations with Professor Heble



The course will be instructed by Nikhil A. Heble (Pharm.D., J.D.), a registered patent attorney with the law firm Blank Rome LLP. Professor Heble has vast experience handling intellectual property related matters, including patent procurement, infringement and validity studies, and due diligence; particularly in the areas of pharmaceuticals, diagnostics, medical devices, biotechnology, organic chemistry, drug and oral care formulation, and medicine. His experience also includes acquiring and licensing patents, as well as litigation.

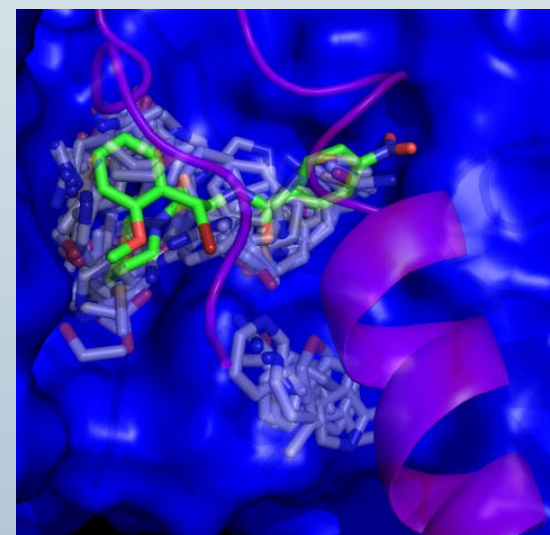
## **Program Contact Info**

**Dr. John Kulp, PhD**  
**Academic Director**

Phone: (215) 589-6357

Email: [john.kulp@bblumberg.org](mailto:john.kulp@bblumberg.org)  
[blumberginstitute.org](http://blumberginstitute.org)

Address: 3805 Old Easton Road  
Doylestown, PA 18902



**Intellectual Property: A  
Limited Enrollment  
Course Critical to a  
Successful Business  
Strategy**

# Intellectual Property: Critical to a Successful Business Strategy

A comprehensive training course in intellectual property matters; including patentability requirements, third-party relationships, and infringement and licensing for entrepreneurs. The program includes scheduled private consultation sessions between the participant and the instructing patent attorney due to the anticipated diversity of experience and stage of the participant discoveries.

## Nikhil A. Heble

Professor Heble serves as IP Advisor and Corporate Secretary for Thubrikar Aortic Valve, Inc. (TAVI) – a Philadelphia-area medical device company. He also counsels a diverse client base – including publicly traded companies, investment firms and universities – on a wide variety of intellectual property related matters. Prof. Heble began his legal career in private practice with a large Philadelphia-based law firm. Prior to attending law school, Prof. Heble worked as a pharmacist at Thomas Jefferson University Hospital in Philadelphia, PA.



## **Tuition:**

\$895 including materials. Enrollment is limited. Registration on a first come basis due March 15, 2016.

## **Registration:**

[blumberginstitute.org/education-training](http://blumberginstitute.org/education-training)

# Blumberg Institute

The Baruch S. Blumberg Institute, BSBI, located in Doylestown, PA was founded in 2003 to use discovery science to find, and develop, new therapies and biomarkers for hepatitis B and liver cancer. Led by Timothy Block, Ph.D., formerly a tenured professor at Thomas Jefferson University and Drexel University College of Medicine, the BSBI has also evolved into an incubator for biotech (and related) startup firms enabled by a faculty of over twenty internationally recognized researchers.

## **Education**

The Baruch S. Blumberg Institute is the nation's leading nonprofit research organization dedicated to hepatitis B and liver cancer worldwide. It was established by the Hepatitis B Foundation in 2003 to fulfill its research mission of finding a cure for hepatitis B in our lifetime. BSBI has academic relationships with the University of Pennsylvania, University of Oxford, Drexel University, and The Commonwealth Medical College. BSBI offers scientific seminars, interactions with the commercial sector, and internship programs.

